

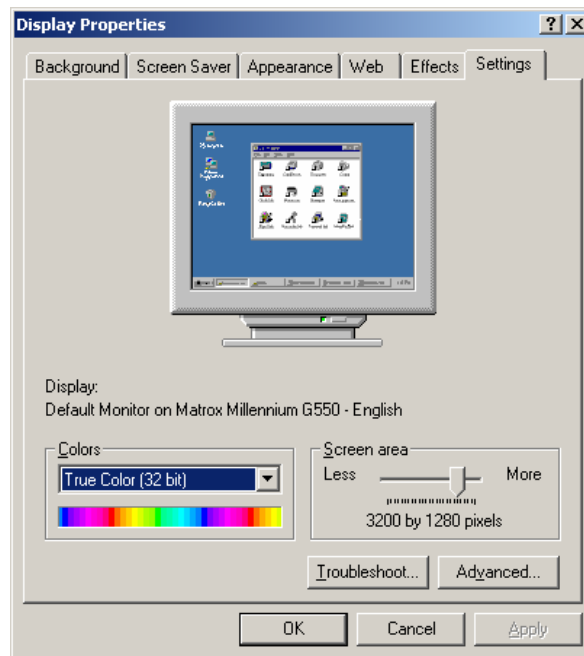
Configuring Matrox multi-display for Autodesk® Inventor®

With Millennium G450 and Millennium G550 graphics cards

Overview

With your Matrox Millennium G-Series product, you can run CAD software, such as Autodesk® AutoCAD® or Autodesk® Inventor®, across two displays, in DualHead®.

It is best to run 3D OpenGL applications in a stretched environment as the stretched environment does not change the dynamics of memory allocation and display list management, as originally designed by Autodesk. In Stretched mode, individual displays are combined into one Windows® display, and have the same resolution and color palette. The settings of the individual displays are changed through Windows controls as if they were a single display.




Using Matrox **PowerDesk** software, you can configure your desired DualHead setup.

Before changing your multi-display setup with PowerDesk software, make sure that your monitors are properly connected. For information on how to connect your monitors to your Matrox product, see the **Connection setup** section of your Matrox user guide.

Accessing PowerDesk

Your Matrox display driver includes Matrox PowerDesk software. This software helps you get the most of your Matrox graphics card. To access Matrox PowerDesk software:

- **Matrox PowerDesk** – Right-click your Windows desktop background, then click **Properties** → **Settings** → **Advanced**. Also, to quickly access PowerDesk features, click the Matrox QuickDesk icon () on your Windows taskbar.

Note: PowerDesk may be configured so that the PowerDesk icon doesn't appear on your Windows taskbar.

Using Matrox PowerDesk

Use Matrox PowerDesk software to take full advantage of your Matrox Millennium G450 or G550 product and to access additional Matrox display-related features.

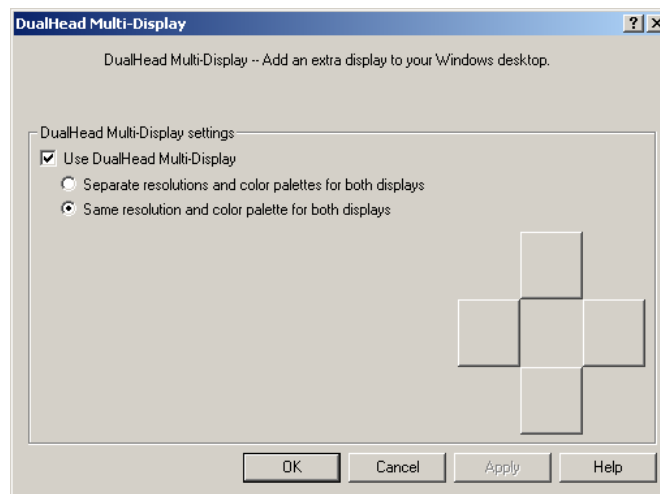
Note: If you have a newer Matrox product or your Matrox software was provided by the manufacturer of your computer, full OpenGL support may be disabled with your Matrox display driver. For a Matrox display driver with full OpenGL support enabled, see the Matrox Web site (www.matroxcad.com). If your Matrox product was provided by the manufacturer of your computer, check the manufacturer's website for a display driver. A display driver provided by the manufacturer of your computer is more likely to be tested with your computer model.

DualHead Multi-Display Setup

With your Matrox graphics card, you can enable a second display as part of your Windows desktop. This is the Matrox *DualHead Multi-Display* feature.

If a Matrox display driver is already installed and you want to enable Stretched mode:

- 1 Access the PowerDesk **DualHead** property sheet.
- 2 Double-click **Features**, and then choose **DualHead Multi-Display**.
- 3 To change your DualHead Multi-Display settings, enable **Use DualHead Multi-Display**, and select **Same resolution and color palette for both displays**. Both displays always use the same resolution and color palette (*stretched* mode).



Note: Windows 2000 – If “**Same resolution...**” is unavailable, you’re already using *Stretched* mode. In this case, simply make sure **Use DualHead Multi-Display** is enabled.

- 4 Click **OK** → **Yes** to restart your computer and for changes to take effect.

For information on additional DualHead features, see **PowerDesk help**.

Example of Inventor running in DualHead®



Matrox's DualHead output capability provides double the desktop space for increased productivity compared to using a single-display configuration. Here, the first display shows a 3D isometric view of an engine assembly while the second is used to display a 2D drawing and an Engineer's Notebook.

More PowerDesk information

For more information on PowerDesk software:

Matrox PowerDesk: Right-click your Windows desktop background, then click **Properties** → **Settings** → **Advanced**. Access the PowerDesk **Information** property sheet, and then click **Help** or **View Readme File**.